

Rotary Vane Vacuum Pumps

VRTL 5W

Oil Lubricated

Can withstand high level of inlet water vapor

For saturated air (wet) service



Low Maintenance

Air Cooled Design

Single stage

Integrated closed loop oil recirculation system

Zepher UK Ltd
Unit 2 Radnor Park Trading Estate
Back Lane Congleton
Cheshire CW12 4XJ
Tel: 01260 272800
Fax: 01260 272444

Rotary Vane Vacuum Pumps

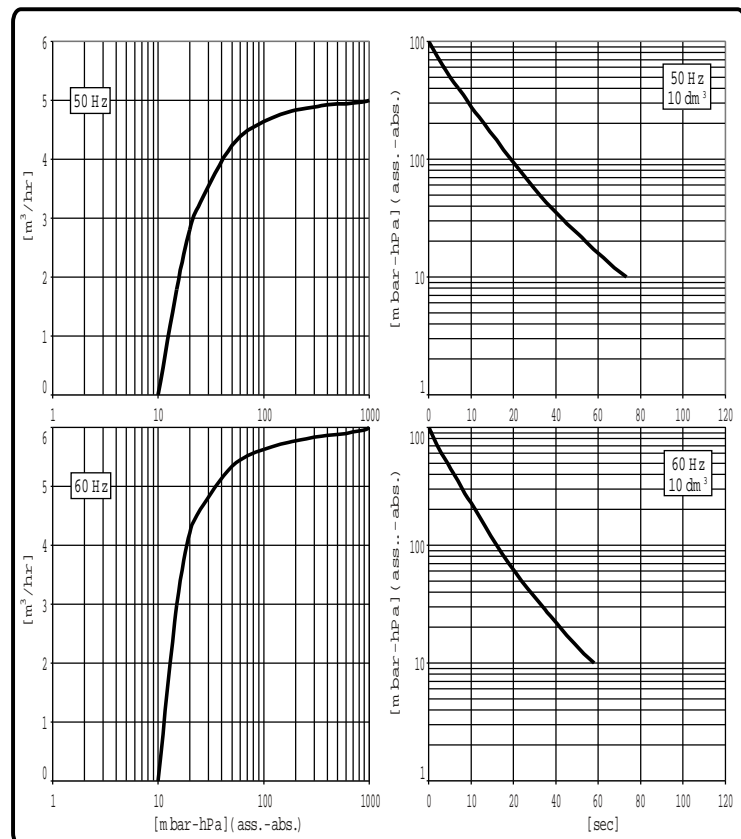
VRTL5W



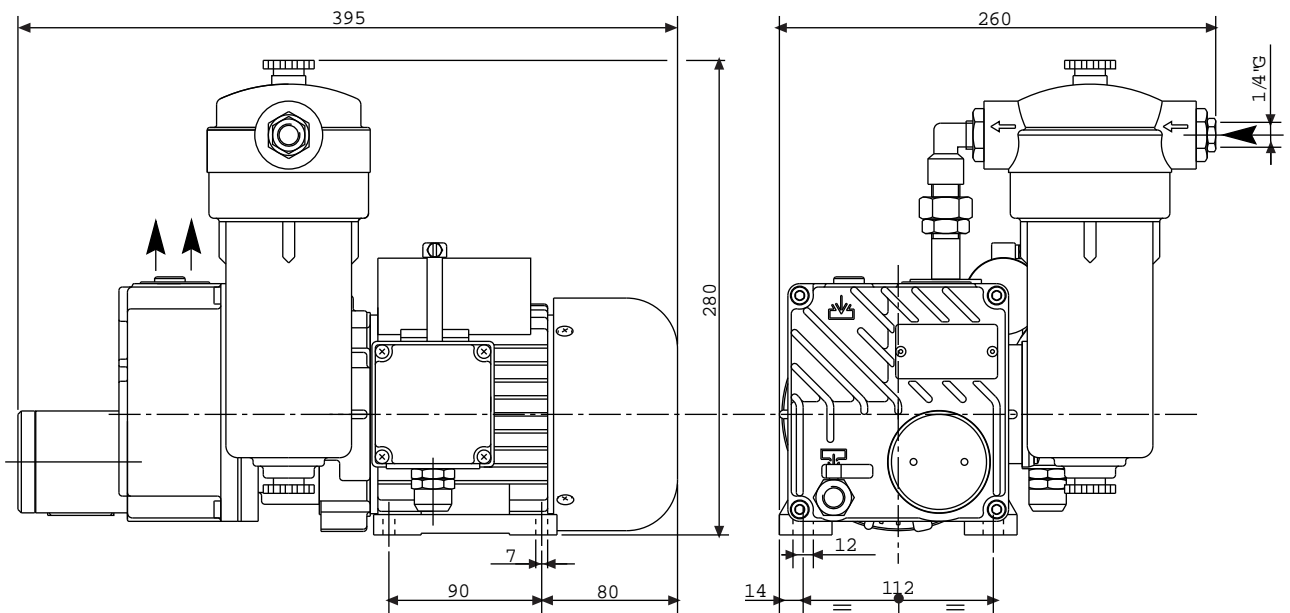
- Oil/Water separator with condensate drain valve
- Extremely reliable for many industrial applications
- High Efficiency exhaust filter 99.9% removal of exhaust fumes
- Less vanes than other rotary vane vacuum pumps
- Longer vane life and less vane replacement
- Heavy duty construction
- Compact design - Small footprint
- Low noise level - Air cooled design
- Direct drive - Easy to install
- High oil level switch

Model		VRTL5W	
		50Hz	60Hz
Flow	m ³ /hr	5	6
Pressure	m bar hPa	10	
Max Inlet Pressure	m bar hPa	30	
Max vapour pumping rate	kg/h	0,11	
Motor power	(1-) Kw	0,18	0,22
	(3-) Kw	0,37	0,45
R.p.m	n/min	1400	1700
Noise Level (1 metre)	dB (A)	58	60
Operating temp*	°C	65 ÷ 70	70 ÷ 75
Oil type		SW 60 (BV68)	
Oil quantity		0,25	
Weight	dm ³	14,5 [142,2]	12,5 [122,6]
Pump intake	(1-) Kw (3-) Kw	kg [N]	1/4" G

(* Ambient temp 20°C



Dimensions



Rotary Vane Vacuum Pumps

VRTL 25W

Oil Lubricated

Can withstand high level of inlet water vapor

For saturated air (wet) service



Low Maintenance

Air Cooled Design

Single stage

Integrated closed loop oil recirculation system

Zepher UK Ltd
Unit 2 Radnor Park Trading Estate
Back Lane Congleton
Cheshire CW12 4XJ
Tel: 01260 272800
Fax: 01260 272444

Rotary Vane Vacuum Pumps

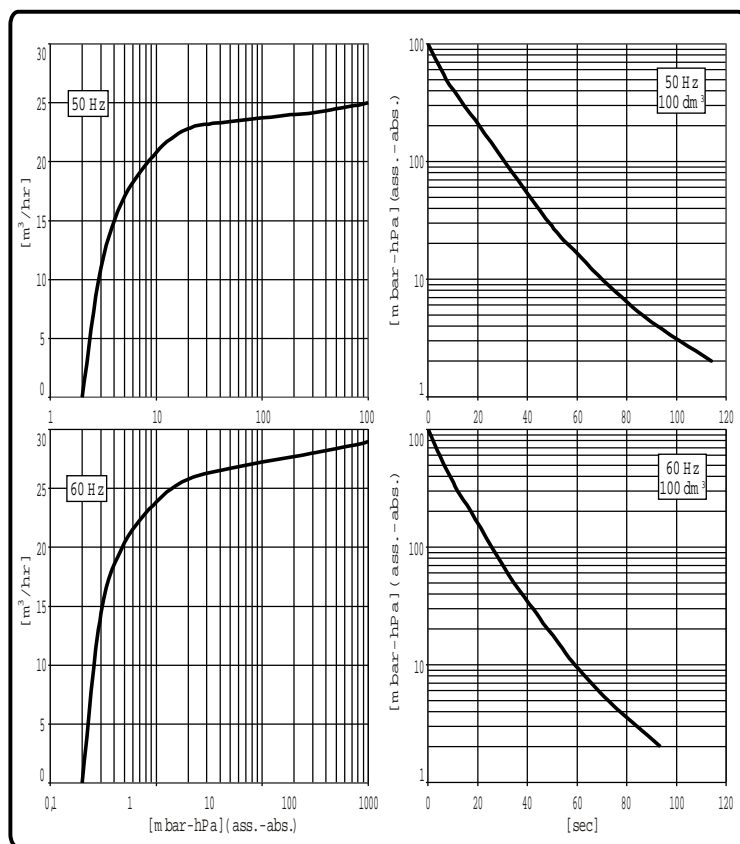
VRTL25W



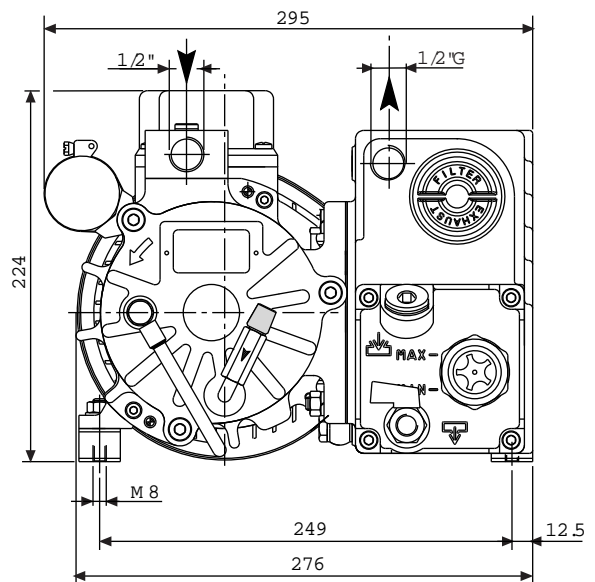
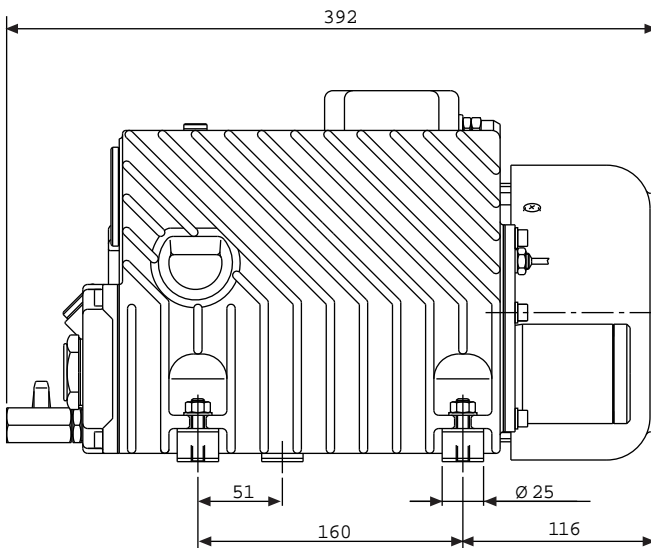
- Oil/Water separator with condensate drain valve
- Extremely reliable for many industrial applications
- High Efficiency exhaust filter 99.9% removal of exhaust fumes
- Less vanes than other rotary vane vacuum pumps
- Longer vane life and less vane replacement
- Heavy duty construction
- Compact design - Small footprint
- Low noise level - Air cooled design
- Direct drive - Easy to install
- High oil level switch

Model	VRTL25W		
	50Hz	60Hz	
Flow	m ³ /hr	25	29
Pressure	m bar hPa	2	
Max Inlet Pressure	m bar hPa	50	
Max vapour pumping rate	kg/h	0,9	
Motor power	(1~) Kw (3~) Kw	0,75	0,90
R.p.m	n/min	1400	1700
Noise Level (1 metre)	dB (A)	62	65
Operating temp*	°C	80 ÷ 85	85 ÷ 90
Oil type		SW 60 (BV68)	
Oil quantity		0,8÷1,1	
Weight	dm ³	28,0 [274,6]	26,0 [255,0]
Pump intake	(1~) Kw (3~) Kw kg [N]	1/2" G	

(*) Ambient temp 20 °C



Dimensions



Rotary Vane Vacuum Pumps

VRTL 40W VRTL 60W

Oil Lubricated

Can withstand high level of inlet water vapor

For saturated air (wet) service



Low Maintenance

Air Cooled Design

Single stage

Integrated closed loop oil recirculation system

Zepher UK Ltd
Unit 2 Radnor Park Trading Estate
Back Lane Congleton
Cheshire CW12 4XJ
Tel: 01260 272800
Fax: 01260 272444

Rotary Vane Vacuum Pumps

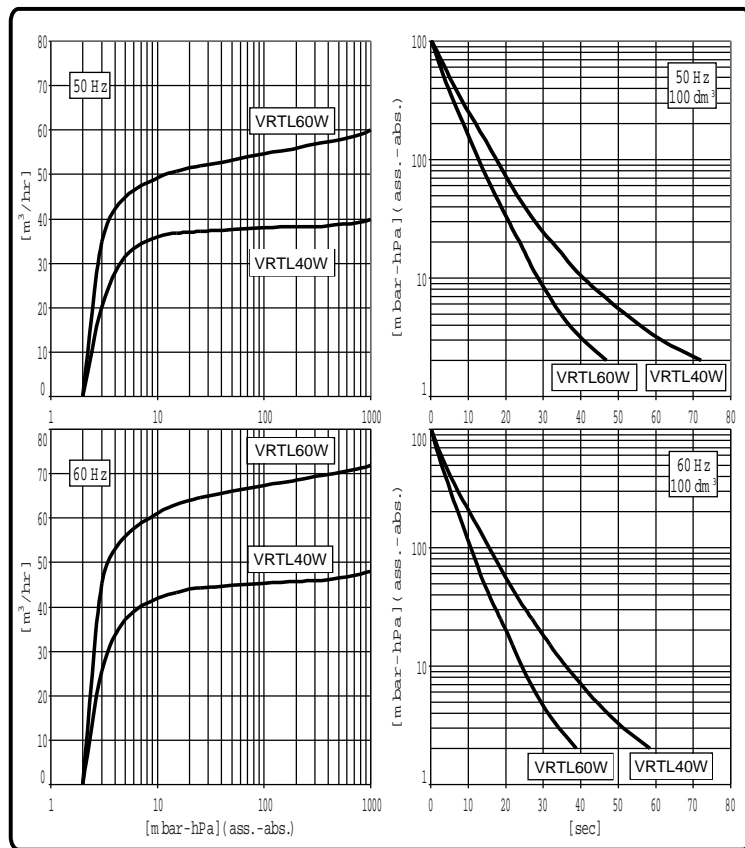
VRTL40W VRTL60W



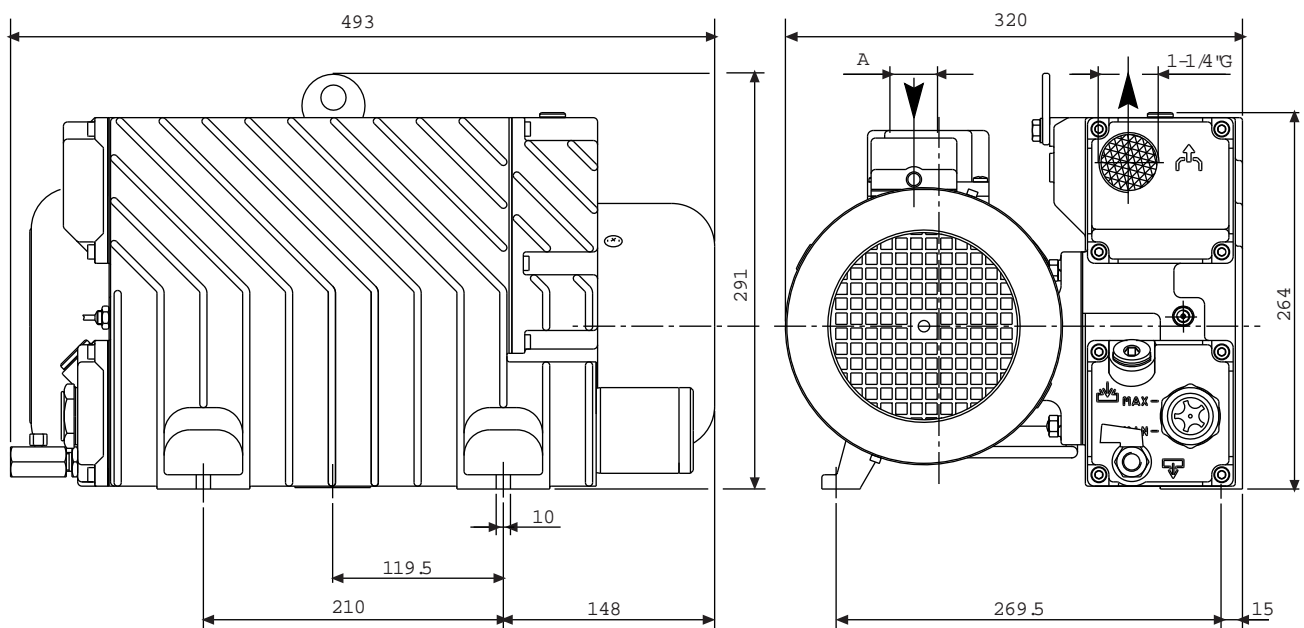
- Oil/Water separator with condensate drain valve
- Extremely reliable for many industrial applications
- High Efficiency exhaust filter 99.9% removal of exhaust fumes
- Less vanes than other rotary vane vacuum pumps
- Longer vane life and less vane replacement
- Heavy duty construction
- Compact design - Small footprint
- Low noise level - Air cooled design
- Direct drive - Easy to install
- High oil level switch

Model		VRTL40W		VRTL60W	
		50Hz	60Hz	50Hz	60Hz
Flow	m ³ /hr	40	48	60	72
Pressure	m bar hPa	2			
Max Inlet Pressure	m bar hPa	40		50	
Max vapour pumping rate	kg/h	1,2		2,1	
Motor power	(1~) Kw (3~) Kw	1,1	1,35	1,5	1,8
R.p.m	n/min	1400	1700	1400	1700
Noise Level (1 metre)	dB (A)	66	68	68	70
Operating temp*	°C	70÷75	75÷80	75÷80	80÷85
Oil type		SW 60 (BV68)			
Oil quantity	dm ³	1,1±1,7			
Weight		42,5 [416,9]		43,5 [426,7]	
Pump intake	(1~) Kw (3~) Kw kg [N]	1" G		1-1/2" G	

(*) Ambient temp 20°C



Dimensions



	A
VRTL 40W	1 "G
VRTL 60W	1-1/2 "G

Rotary Vane Vacuum Pumps

VRTL 100W

Oil Lubricated

Can withstand high level of inlet water vapor

For saturated air (wet) service



Low Maintenance

Air Cooled Design

Single stage

Integrated closed loop oil recirculation system

Zepher UK Ltd
Unit 2 Radnor Park Trading Estate
Back Lane Congleton
Cheshire CW12 4XJ
Tel: 01260 272800
Fax: 01260 272444

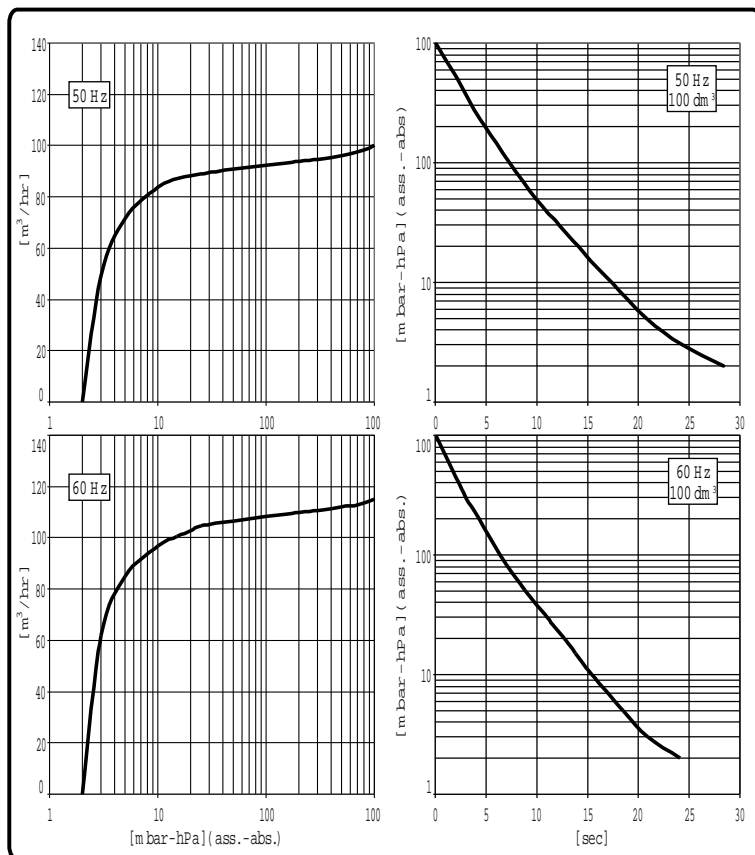
Rotary Vane Vacuum Pumps VRTL100W



- Oil/Water separator with condensate drain valve
- Extremely reliable for many industrial applications
- High Efficiency exhaust filter 99.9% removal of exhaust fumes
- Less vanes than other rotary vane vacuum pumps
- Longer vane life and less vane replacement
- Heavy duty construction
- Compact design - Small footprint
- Low noise level - Air cooled design
- Direct drive - Easy to install
- High oil level switch

Model	VRTL100W		
	50Hz	60Hz	
Flow	m ³ /hr	100	115
Pressure	m bar hPa	2	
Max Inlet Pressure	m bar hPa	40	
Max vapour pumping rate	kg/h	2,9	
Motor power	(1~) Kw (3~) Kw	2,2	2,7
R.p.m	n/min	1400	1700
Noise Level (1 metre)	dB (A)	70	72
Operating temp*	°C	75 ÷ 80	80 ÷ 85
Oil type		SW 100 (BV100)	
Oil quantity	dm ³	2÷3	
Weight		70 [686, 7]	
Pump intake	(1~) Kw (3~) Kw	kg [N]	1-1/2" G

(*) Ambient temp 20°C



Dimensions

